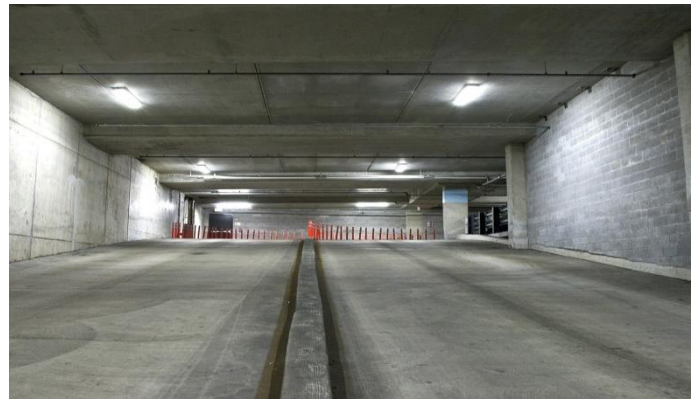


LED VAPOR TIGHT SYSTEM

THE HIGH PERFORMANCE

LED Luminaire Series for Parking Garages, Stairwells, Wet Locations Coolers and General Illumination

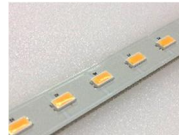


KEY FEATURES INCLUDE:



Multiple Color Options

Ensure that the new lighting will match your current aesthetics, and allows for custom color options.



Long Lasting LED Chips

L₉₀ in excess of 101kHrs



10 Year Warranty

Industry Leading 10 Year Warranty on all LED and external drivers.



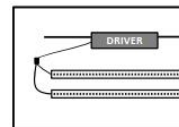
High Color Rendering

Colors are enhanced due to the use of LEDs selected directly on the black body curve.



Manufactured in America

With domestic and imported components. Factory: Southeastern PA. Higher quality control, faster delivery times, and new domestic job creation.



Independent Class II Driver

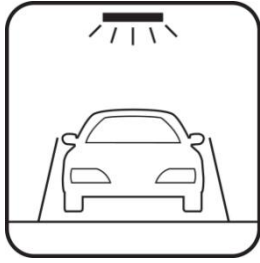
Safety, improved thermal management, and extended lifetime are gained by locating the driver remote from the LEDs.



LED Lighting | Forged in America™

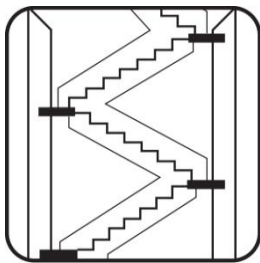
LED VAPOR TIGHT SYSTEM

24/7 APPLICATIONS



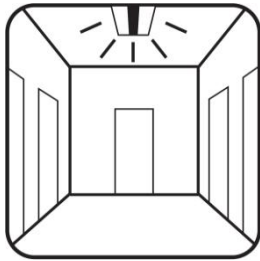
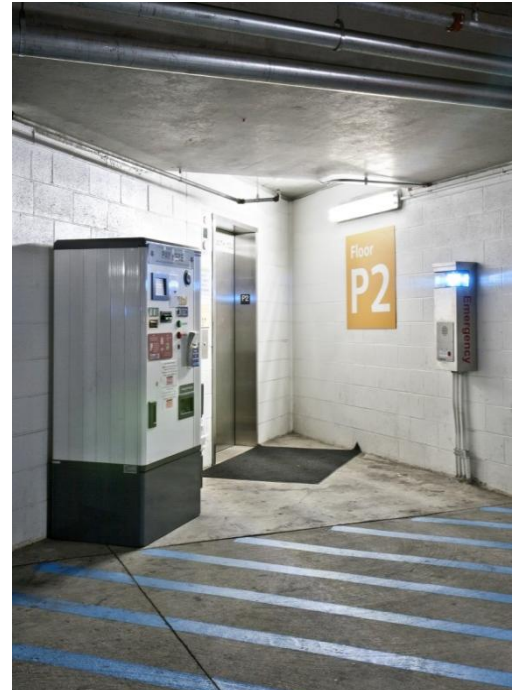
PARKING

Structures, surface and underground garages



STAIRWELL

24/7 fire stairs for any property type



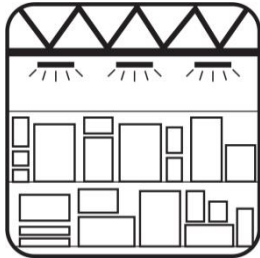
HALLWAY

Hotels, hospitals, multi-family & dorms



Before LED RetroFit

After LED RetroFit



INDUSTRIAL HIGH BAYS

Factories, warehouses & distribution centers



Philadelphia Headquarters: 487 Devon Park Drive, Suite 204, Wayne, PA 19087

www.independenceLED.com (484) 588-5401



LED Lighting | Forged in America™

LED VAPOR TIGHT SYSTEM

LENGTH OPTIONS:

2' & 4' – standard, 8' - special order

OUTPUT WATTAGE (See table below)

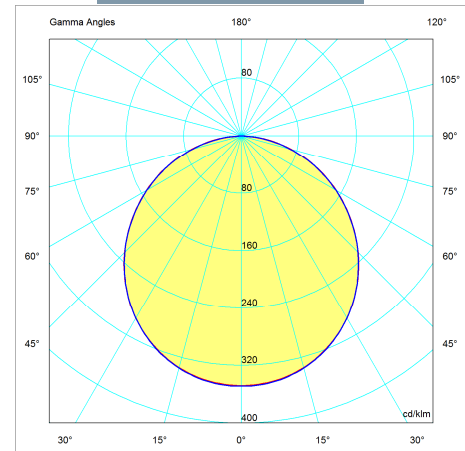
COLOR OPTIONS:

3000K, 3500K, 4000K, 5000K standard⁵

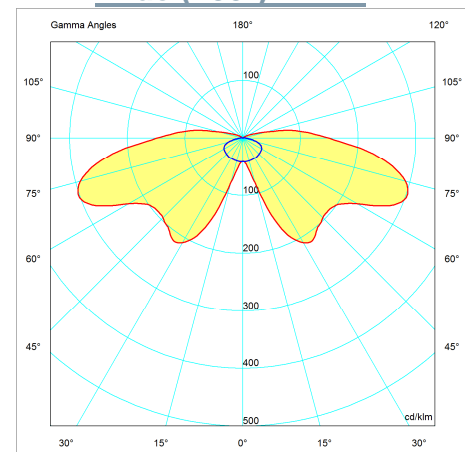
CRI – 85

DIMMING - standard

Normal (60°)- VT2



Wide (180°) VTW2



Specification Table	
Environmental	Suitable for Damp Locations up to IP67 per EN60529
Ambient Operation	-25°F to 104°F/(-31°C to 40°C) ^{6,7}
Storage	-25°F to >185°F/(-31°C to >85°C)
Wattage	See table below ¹²
Input Voltage (nominal)	100-277VAC 50/60Hz .8-.3A [120-300VDC] ⁹ 347-480VAC 50/60Hz via internal autotransformer
Power Factor (PF)	>0.9
Total Harmonic Distortion (ATHD)	<20%
Life Time	>100khrs
Rated Life-LEDs per TM-21 -	Calculated L ₇₀ (10k) = 378kHrs ¹⁶
LED Driver ⁷	Calculated L ₉₀ (10k) = 101kHrs ¹⁶
Lifetime - MBTF ² -	Reported L ₇₀ (10k) >60kHrs
LM80 Data	NVLap Accreditation
LED Type	SMD 5630
Efficiency (some models)	>130lm/W (See table below) ¹²
Normal	160°FW, 120°FWHM
Wide	180°FW, 180°FWHM
Certifications	cUL, UL, FCC, DLC
Warranty ¹⁷	LED Driver - 10 years
	LED - 10 years
	Fixture - 10 years
Dimming	<20%-100% (See below) 0-10V
Off State Power Consumption	0 Watts
On State	Instantaneous

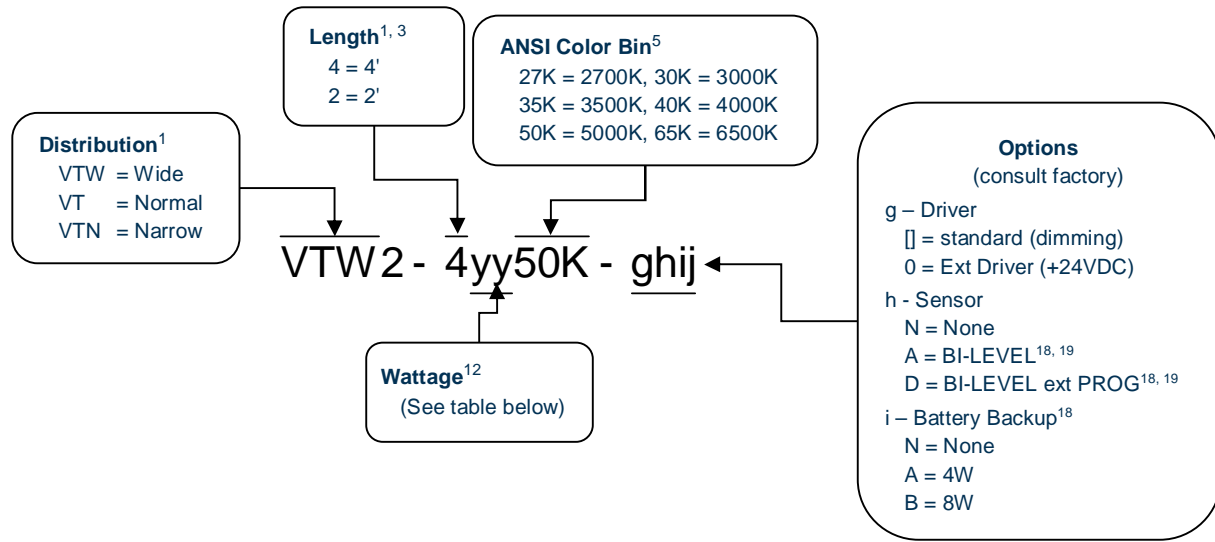
Package Information	
Standard Package	Case
Quantity	1
Sales Units	1
Package Items	1 Unit Complete
Weight lbs(kg)	4' - 18 (9) // 2' - 9 (5)



Philadelphia Headquarters: 487 Devon Park Drive, Suite 204, Wayne, PA 19087

www.independenceLED.com (484) 588-5401

LED VAPOR TIGHT SYSTEM



Accessories:

- Mounting Brackets (188-9005204)
- Handheld Remote Bi-Level PROG Sensor (182-0000520)

Options


- SS = Stainless Steel Latches

Most Popular

VTW2-41850K-DA

VTW2-41350K-DA

VT2-42850K

 Click Here	DLC V4.2 // Premium //
	VTW2-21450K VTW2-41350K VTW2-41850K VTW2-42850K

Length (ft)	Specified Wattage (yy) (W)	Nominal Wattage ¹² (W)	Lumens ^{1,12} @5000K (-12%/ to 2700K)	
			VTW2	VT2
2	09	18	2500	2550
	14	28	3475	3900
4	09	18	2500	2650
	13	26	3600	3950
	18	36	4650	5050
	24*	48*	6850	7475
	28	56	6850	7475

* – 0 (Ext 24VDC Driver)



Notes

1. Not all model combinations are available
2. MBTF per MIL-HDBK-217F
3. Extended lead times and minimums maybe required for some models
4. N/A
5. Other ANSI Color bins available
6. Operation to -40°F/-40°C is available
7. Some low wattage models -4°F to +140°F/(-20°C to 60°C), consult factory.
8. Extended warranties are available
9. Non-UL applications (Some Models)
10. N/A
11. Specifications and availability subject to change without notice
12. Varies depending on color temperature, CRI, LED driver and lens ($\pm 10\%$)
13. N/A
14. EPCo - 179d tax incentive ready product given dimming bi-level switching requirements
15. Certain chemicals that may exist in end-user locations release airborne contaminants that can impact the integrity and safety of key fixture components that contain acrylic or polycarbonate material.
16. Worst case temperature for VTW2-428 @25°C ambient.
17. Consult website for further details.
18. Conforms to basis of NFPA 101, ICB 1006, NYC BC 1006 when used with bi-level control and/or battery backup. Please consult factory for proper specification and installation. IndependenceLED is not responsible for improper installation, maintenance, and/or specification.
19. Bi-Level Dimming, when used at the 50% level, wattage is reduced by $\frac{1}{2}$. For example 36W goes to 18W.

Compliance Standards

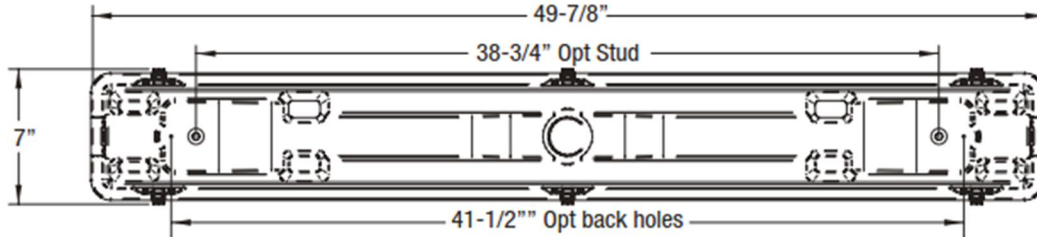
- UL 1993 - Self-Ballasted Lamps and Lamp Adapters, Ed. 4: 2012
- UL 1598 - Luminaires
- UL 1598C - Light-Emitting Diode (LED) Retrofit Luminaire Conversion Kits
- UL 8750 - Standard for Light Emitting Diode (LED) Equipment for Use in Lighting Products, Ed. 1: 2009
- CSA C22.2 No. 250.13 - Light emitting diode (LED) equipment for lighting applications, Ed. 1222012
- EN 55015:2006 - Limits and methods of measurement of radio disturbance characteristics of electrical lighting and similar equipment
- EN 61000-3-2:2006 - Electromagnetic compatibility (EMC). Limits. Limits for harmonic current emissions
- EN 61000-3-3:2008 - Electromagnetic compatibility (EMC). Limits. Limitation of voltage changes, voltage fluctuations and flicker in public low-voltage supply systems
- FCC Part 15, Subpart B, Class B -
- ANSI/ANSL G C78.81-2010 - Electric Lamps-Double-Capped Fluorescent Lamps-Dimensional and Electrical Characteristics
- ANSI/NEMA/ANSL G C78.377-2008 - American National Standard for Specifications for the Chromaticity of Solid State Lighting (SSL) Products
- IEC 60529-2004 - Degrees of Protection Provided by Enclosures (IP Code)
- DOH Article 81.19 (b) - Lighting and ventilation
- FDA Article 6-202.11 - Light Bulbs, Protective Shielding



LED VAPOR TIGHT SYSTEM

Mechanical

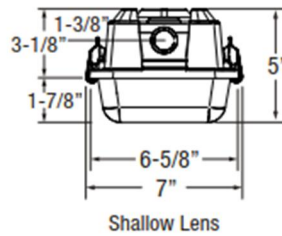
TOP VIEW



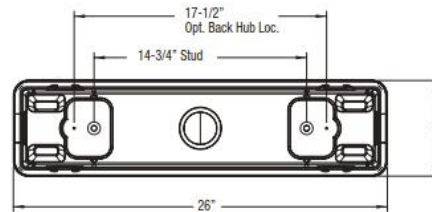
SIDE VIEW



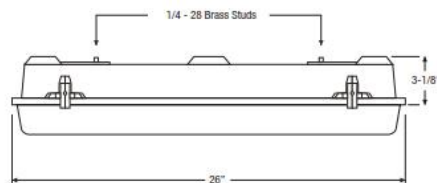
END VIEW



TOP VIEW



SIDE VIEW



Note: Brass Studs on Inside of Unit are 10-32

END VIEW

